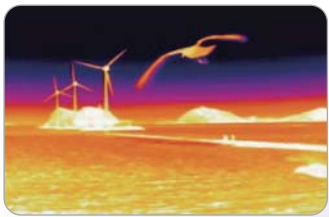




IP68 All Weatherproof



Thermal Imaging Camera

## THERMAL IMAGING PTZ CAMERA ULTIMATE SURVEILLANCE SOLUTION

### THERMAL IMAGING CAMERA

- 720 x 480 Super Clear Video Resolution (Thermal Imaging) with patented QIET(Quality Image Enhancement Technology)
- AOZ (Advanced Optimal Zoom)
- Built-in TEC (Thermo Electric Controller)
- Direct Short Key Controls on Control Board
- Lowest NETD : 40mk

### MECHANISM

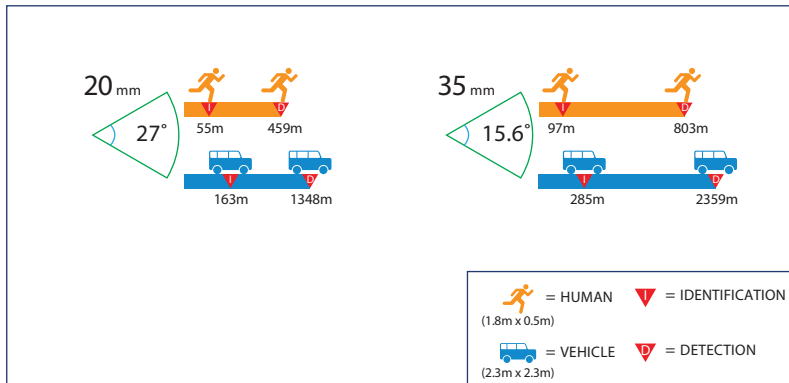
- IP68 All Weatherproof
- 1,000 Hours Salt Spraying Test Passed
- 3G Vibration Test Passed
- 360° Endless Panning / Tilting



# ULTIMATE SURVEILLANCE SOLUTION

TPV-BS thermal security cameras let you see intruders and other threats to your facility's security clearly in total darkness and in bad weather. The TPV-BS enclosure provides precision 360° endless pan/tilt control while providing fully programmable tour and scan. Fully enabled for control and operation over IP and serial networks.

## EXCELLENT RANGE PERFORMANCE



## DIMENSIONS



## SPECIFICATIONS

Model	TPV - BS	
<b>THERMAL MODULE</b>		
<b>SENSOR</b>		
Thermal Sensor	Uncooled Micro Bolometer	
Pixel Pitch	25µm	
Wave Length	8 ~ 14µm	
NETD	40mK / F1.0	
Output Frequency	NTSC : 59.94Hz (30fps), PAL : 50Hz (25fps)	
Video Output	CVBS : 1.0Vp-p / 75Ω	
Resolution	720 x 480 (NTSC) / 720 x 576 (PAL)	
Lens	20mm (Basic), 35mm (Option)	
<b>FUNCTION</b>		
Calibration	Auto / Manual / Interval(sec) Mode Selectable	
Image Flip	Vertical, Horizontal ON / OFF	
Invers Mode	ON / OFF	
Freeze Mode	ON / OFF	
AGC Mode	Mode : Mode (1, 2, 3, 4), OFF / ACG Level : 5 steps (x1.0, x1.5, x2.0, x2.5, x3.0)	
Temperature Range Process	MIN / MAX Temperature Range Selectable	
Image Mode	B/W and Three Color Modes	
D-Zoom(AOZ)	x4 (15 steps)	
<b>MECHANISM</b>		
<b>PAN/TILT</b>		
Pan Rotation Angle	0° ~ 360°Endless	
Pan Speed	Manual : 0.5° ~ 200°/sec (64step), Preset : MAX 200°/sec	
Tilt Rotation Angle	0° ~ 360°Endless	
Tilt Speed	Manual : 0.5° ~ 200°/sec (64step), Preset : MAX 200°/sec	
System Accuracy	0.0225°	
<b>FUNCTION</b>		
Preset	165 positions with 16-character label available for each position with different speed steps and Freeze Preset available	
Group Tour	Max. 8 Programmable Group Tours (each one consisting of up to 60 preset steps with different steps)	
Auto Scan	Programmable Auto Scan	
Pattern	8 Programmable Patterns (total 480 seconds)	
Password Protection	Available	
Alarm Input	4 Alarms (With various programmable states)	
Alarm Actions	Activate preset, Group Tour, Pattern	
Aux Output	2 Relay	
Auto Flip	Digital Auto Flip (Angle Auto Sensing)	
OSD Menu	Yes	
Communication	Rs-485 (Pelco-D 2400 / 4800 / 9600bps)	
<b>OTHERS</b>		
Dimensions	300mm(W) x 174.3mm(H) x 200mm(D)	
Weight	5.8Kg	
Construction	Aluminum die casting	
Storage Temperature	-40°C ~ +55°C	
Operating Temperature	-30°C ~ +55°C	
Certifications	CE, FCC, IP68	
<b>POWER</b>	<b>AC Type</b>	<b>DC Type</b>
Power Consumption	AC24V 2A 48W (Peak)	DC12V 4.0A 48W (Peak) DC24V 1.8A 43.2W (Peak)
Power Supply	AC24V 50/60Hz 2.6A	DC12V 5.2A DC24V 2.4A

## FEATURES

- 720 x 480 Super Clear Video Resolution (Thermal Imaging) with patented QIET(Quality Image Enhancement Technology)
- AOZ (Advanced Optimal Zoom)
- Built-in TEC (Thermo Electric Controller)
- Direct Short Key Controls on Control Board
- Lowest NETD : 40mk
- IP68 All Weatherproof
- 1,000 Hours Salt Spraying Test Passed (Optional)
- 3G Vibration Test Passed
- 360° Endless Panning / Tilting

## VARIOUS COLOR SETS

